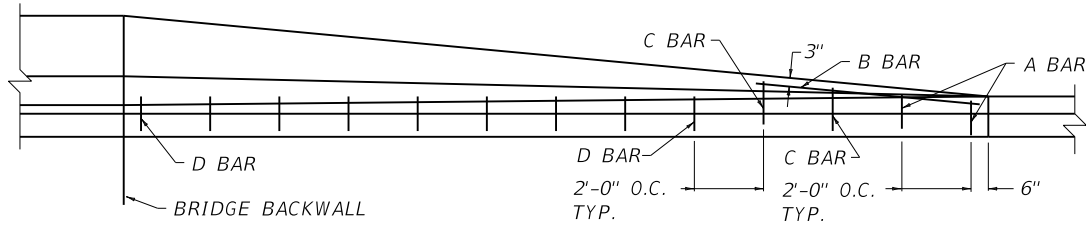
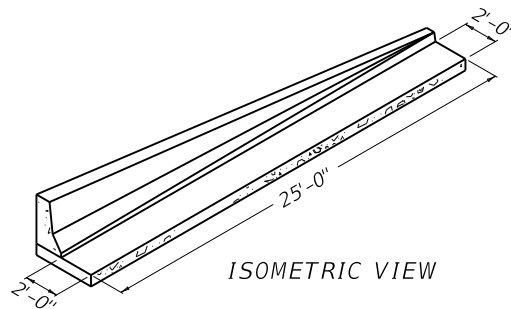


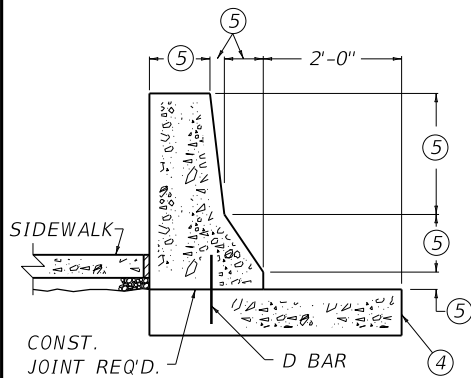
PLAN VIEW



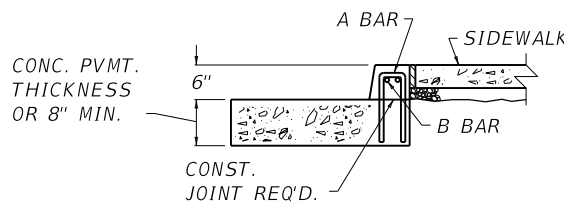
ELEVATION VIEW



ISOMETRIC VIEW



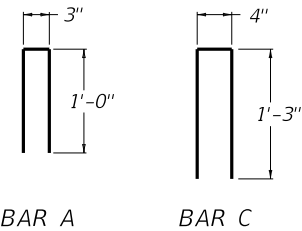
SECTION A-A



SECTION B-B

~ NOTES ~

- BID ITEM AND UNIT TO BID  
CURB TO BARRIER WALL TRANS EACH
1. THE CONTRACT UNIT PRICE EACH FOR THE CURB TO BARRIER WALL TRANSITION SHALL INCLUDE CONCRETE, FORMS, STEEL REINFORCEMENT, EXPANSION JOINT MATERIAL, AND ALL INCIDENTALS NECESSARY TO COMPLETE THE INSTALLATION.
  2. FOR ILLUSTRATION PURPOSES THE DETAILS DEPICT THE CURB TO BARRIER WALL TRANSITION CONNECTING TO A STANDARD CURB, HOWEVER THE CURB TO BARRIER WALL TRANSITION MAY BE CONSTRUCTED TO MATCH ANY ADJOINING CURB.
  3. THE AMOUNT OF CLASS "A" CONCRETE REQUIRED FOR A TRANSITION SECTION WITH A 10 1/2" WIDE TOP IS APPROXIMATELY 2.61 CU. YDS.
  - ④ WHEN THE CURB TO BARRIER WALL TRANSITION ABUTS RIGID PAVEMENT A LONGITUDINAL SAWED CONSTRUCTION JOINT SHALL BE INSTALLED IN ACCORDANCE WITH CUR. STD. DWG. [RPS-010](#).
  - ⑤ SEE STRUCTURE PLANS FOR DIMENSIONS.
  6. CURB TO BARRIER WALL TRANSITION NOT FOR USE ON APPROACH ENDS ON HIGH SPEED N.H.S.



BILL OF REINFORCEMENT				
BAR	QTY.	SIZE	LENGTH	TOTAL LBS. OF STEEL
A	2	5	2'-2"	48
B	2	5	6'-6"	
C	2	5	2'-9"	
D	9	8	1'-0"	

USE WITH CUR. STD. DWG. [RPS-010](#)

KENTUCKY  
DEPARTMENT OF HIGHWAYS

CURB TO BARRIER  
WALL TRANSITION

STANDARD DRAWING NO. RBM-130-05

SUBMITTED *[Signature]* DIRECTOR, BUREAU OF DESIGN 12-01-15  
DATE  
APPROVED *[Signature]* STATE HIGHWAY ENGINEER 12-01-15  
DATE